

APPENDIX A

KEEYASK TRANSMISSION MAP FOLIO

Keeyask Transmission Project

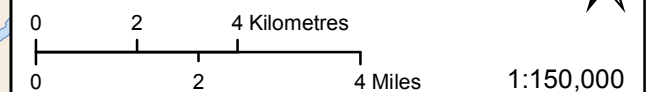
- Preferred Project Infrastructure**
- Generation Outlet Lines (200m ROW)
 - Construction Power Line (KN36) (60m ROW)
 - - - Construction Power Line (Temporary) (60m ROW)
 - Unit Lines (265m ROW)
 - C Construction Power Station
 - S Keeyask Switching Station
 - Project Study Area

- Infrastructure**
- ◆ Converter Station
 - ⊙ Generating Station (Proposed)
 - ⊙ Generating Station
 - Bipole I and II (Existing 500 kV DC Line)
 - Transmission Line
 - - - South Access Road (Proposed)
 - North Access Road

- Map Index**
- 1:20,000 Map Grid Index

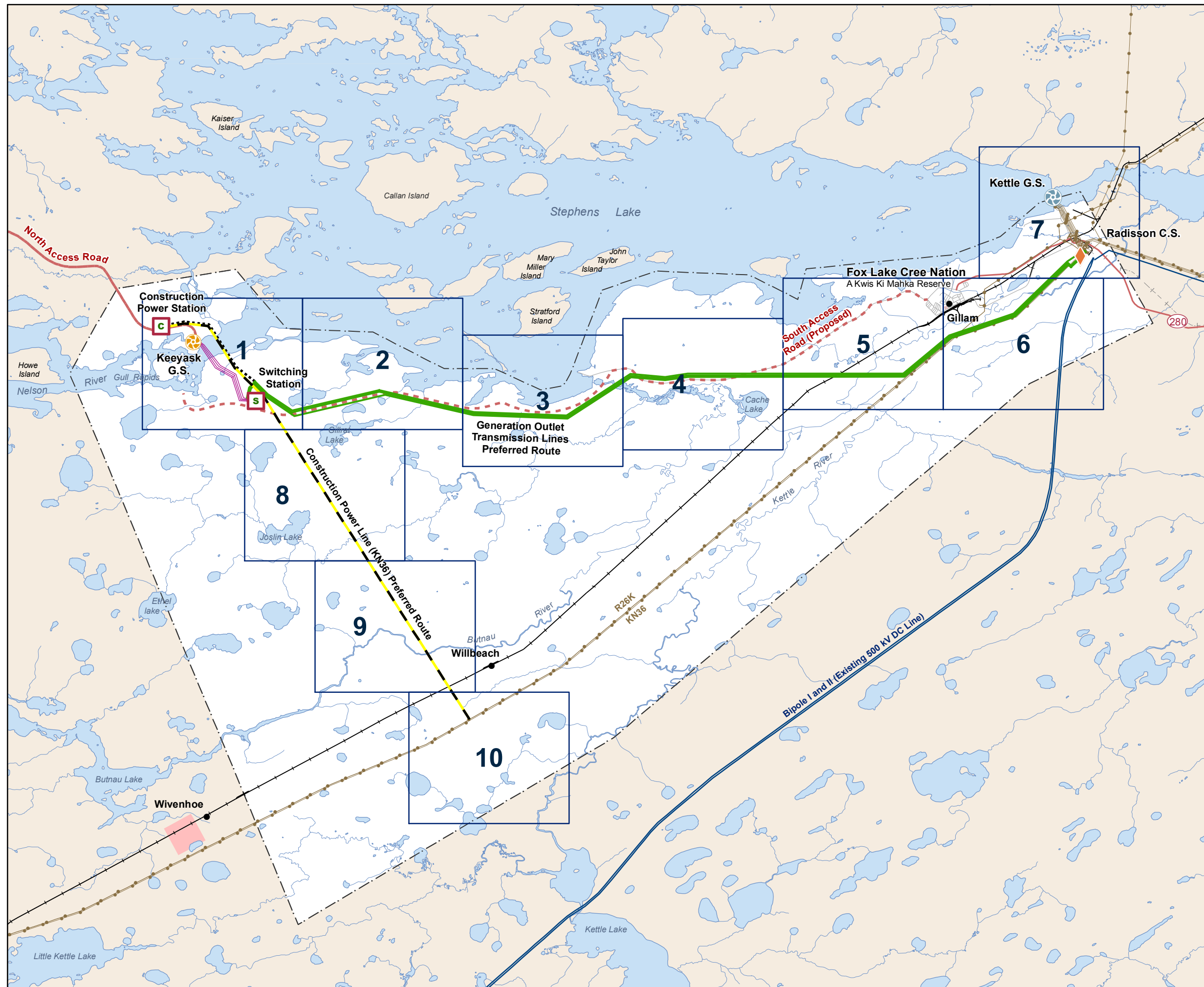
- Landbase**
- Community
 - Provincial Road
 - Municipal Road
 - Active Railway
 - - - Abandoned Railway
 - Watercourse
 - Waterbody
 - First Nation

Coordinate System: UTM Zone 15N NAD83
 Data Source: MBHydro, ProvMB, NRCAN
 Date Created: October 11, 2012



Preferred Routes and Sites Map Index

Draft: For Discussion Purposes Only



Keeyask Transmission Project

Preferred Project Infrastructure

- Generation Outlet Lines (200m ROW)
- Construction Power Line (KN36) (60m ROW)
- Construction Power Line (Temporary) (60m ROW)
- Unit Lines (265m ROW)
- Construction Power Station Site
- Keeyask Switching Station Site
- Project Study Area

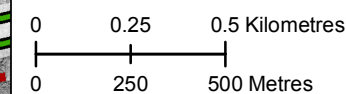
Infrastructure

- Generating Station
- Bipole I and II (Existing 500 kV DC Line)
- Transmission Line
- South Access Road (Proposed)
- North Access Road
- Converter Station
- Keeyask Generation Infrastructure

Landbase

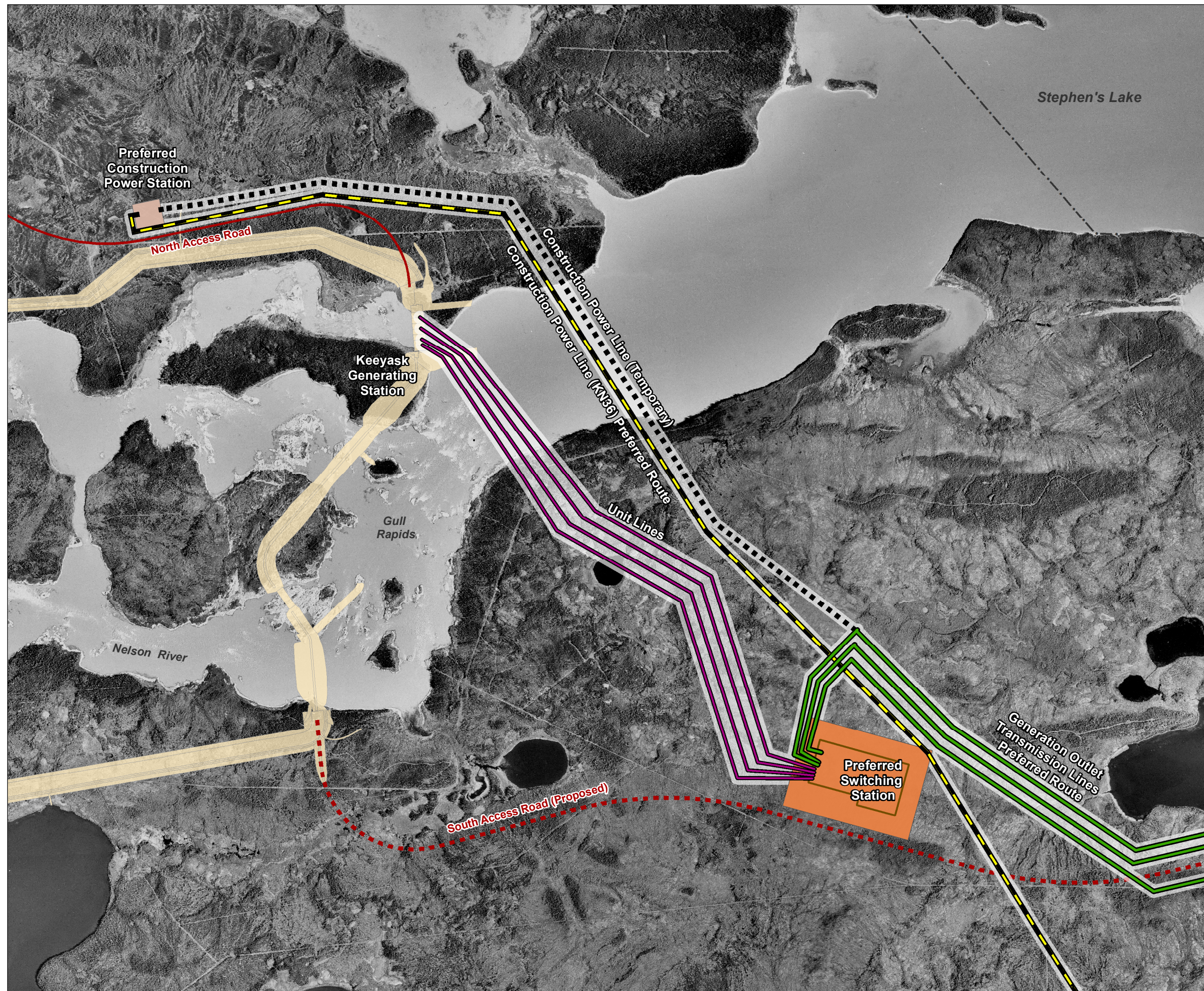
- Community
- Provincial Road
- Municipal Road
- Active Railway
- Abandoned Railway
- Watercourse
- Waterbody
- First Nation

Coordinate System: UTM Zone 15N NAD83
 Data Source: MBHydro, ProvMB, NRCAN
 Date Created: October 11, 2012



Preferred Routes and Sites

Map Folio



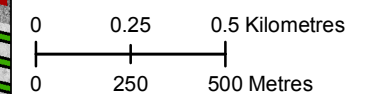
Keeyask Transmission Project

- Preferred Project Infrastructure**
- Generation Outlet Lines (200m ROW)
 - Construction Power Line (KN36) (60m ROW)
 - Construction Power Line (Temporary) (60m ROW)
 - Unit Lines (265m ROW)
 - Construction Power Station Site
 - Keeyask Switching Station Site
 - Project Study Area

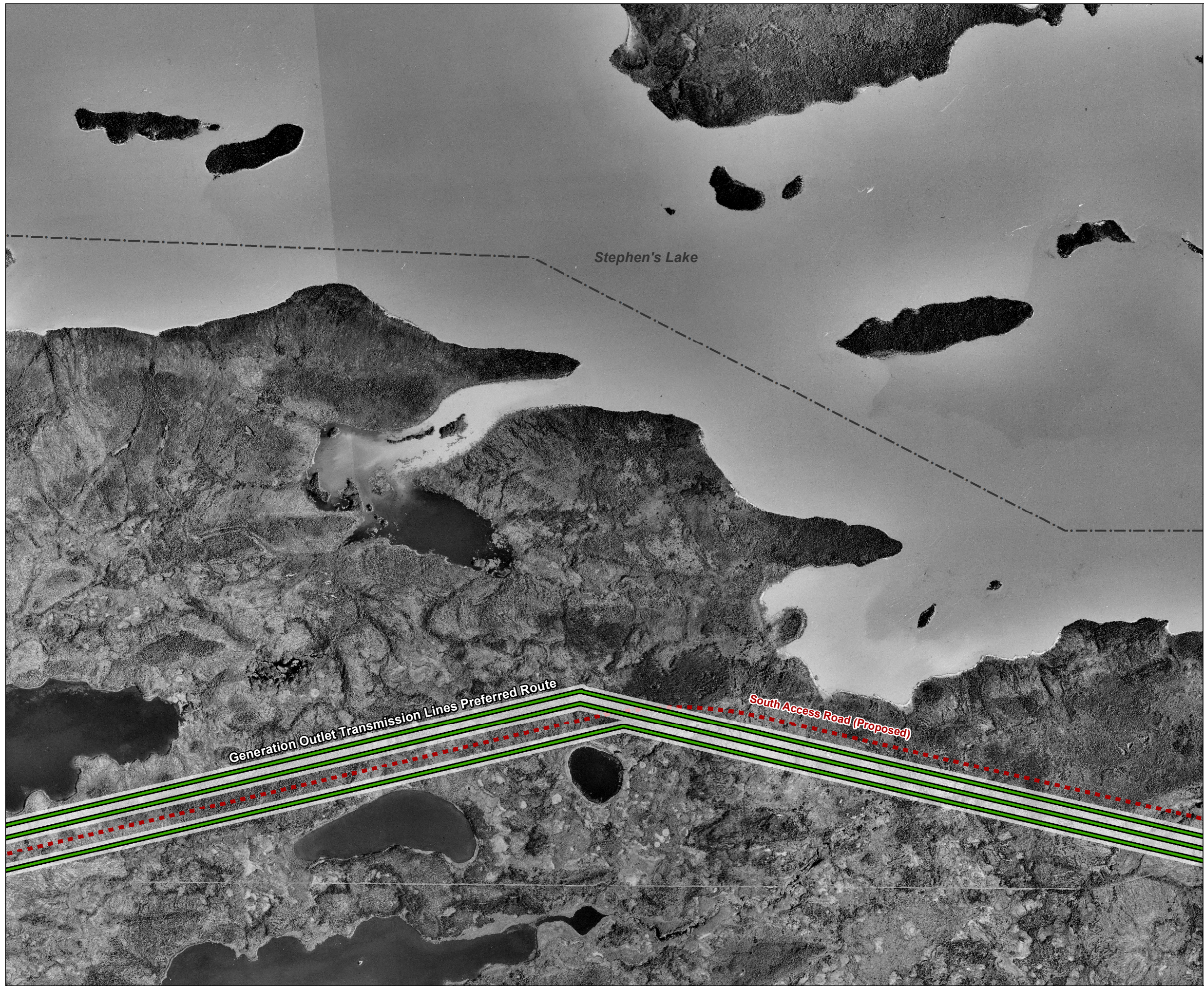
- Infrastructure**
- Generating Station
 - Bipole I and II (Existing 500 kV DC Line)
 - Transmission Line
 - South Access Road (Proposed)
 - North Access Road
 - Converter Station
 - Keeyask Generation Infrastructure

- Landbase**
- Community
 - Provincial Road
 - Municipal Road
 - Active Railway
 - Abandoned Railway
 - Watercourse
 - Waterbody
 - First Nation

Coordinate System: UTM Zone 15N NAD83
 Data Source: MBHydro, ProvMB, NRCAN
 Date Created: October 11, 2012



Preferred Routes and Sites Map Folio



Keeyask Transmission Project

Preferred Project Infrastructure

- Generation Outlet Lines (200m ROW)
- Construction Power Line (KN36) (60m ROW)
- Construction Power Line (Temporary) (60m ROW)
- Unit Lines (265m ROW)
- Construction Power Station Site
- Keeyask Switching Station Site
- Project Study Area

Infrastructure

- Generating Station
- Bipole I and II (Existing 500 kV DC Line)
- Transmission Line
- South Access Road (Proposed)
- North Access Road
- Converter Station
- Keeyask Generation Infrastructure

Landbase

- Community
- Provincial Road
- Municipal Road
- Active Railway
- Abandoned Railway
- Watercourse
- Waterbody
- First Nation

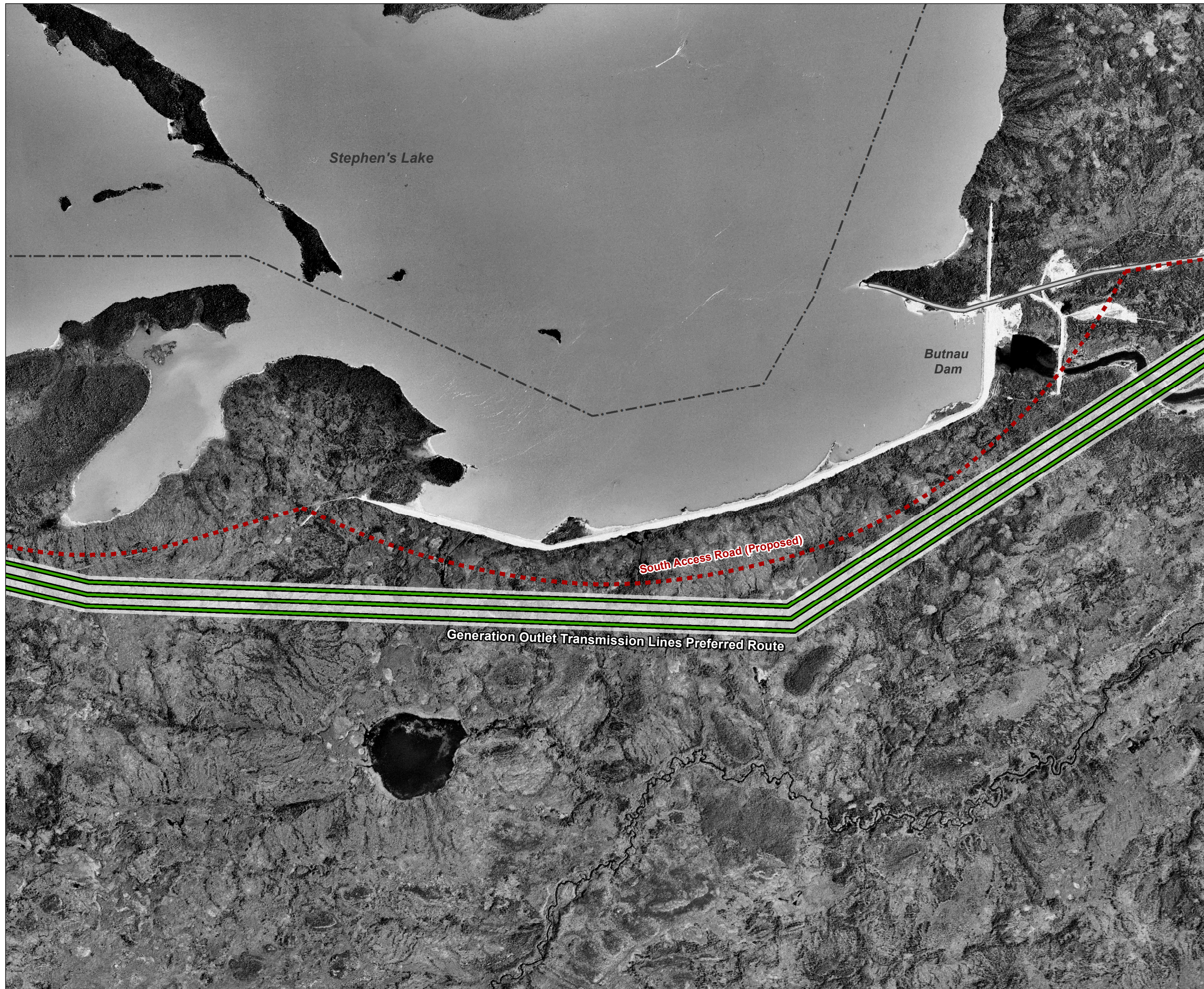
Coordinate System: UTM Zone 15N NAD83
 Data Source: MBHydro, ProvMB, NRCAN
 Date Created: October 11, 2012



0 0.25 0.5 Kilometres
 0 250 500 Metres








1:20,000

Preferred Routes and Sites Map Folio










Keeyask Transmission Project

Preferred Project Infrastructure

-  Generation Outlet Lines (200m ROW)
-  Construction Power Line (KN36) (60m ROW)
-  Construction Power Line (Temporary) (60m ROW)
-  Unit Lines (265m ROW)
-  Construction Power Station Site
-  Keeyask Switching Station Site
-  Project Study Area

Infrastructure

-  Generating Station
-  Bipole I and II (Existing 500 kV DC Line)
-  Transmission Line
-  South Access Road (Proposed)
-  North Access Road
-  Converter Station
-  Keeyask Generation Infrastructure

Landbase

-  Community
-  Provincial Road
-  Municipal Road
-  Active Railway
-  Abandoned Railway
-  Watercourse
-  Waterbody
-  First Nation

Generation Outlet Transmission Lines Preferred Route

South Access Road (Proposed)

Cache Lake

Coordinate System: UTM Zone 15N NAD83
 Data Source: MBHydro, ProvMB, NRCAN
 Date Created: October 11, 2012



0 0.25 0.5 Kilometres
 0 250 500 Metres

1:20,000

Preferred Routes and Sites Map Folio

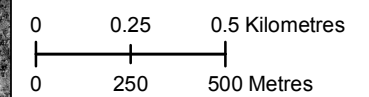
Keeyask Transmission Project

- Preferred Project Infrastructure**
- Generation Outlet Lines (200m ROW)
 - Construction Power Line (KN36) (60m ROW)
 - Construction Power Line (Temporary) (60m ROW)
 - Unit Lines (265m ROW)
 - Construction Power Station Site
 - Keeyask Switching Station Site
 - Project Study Area

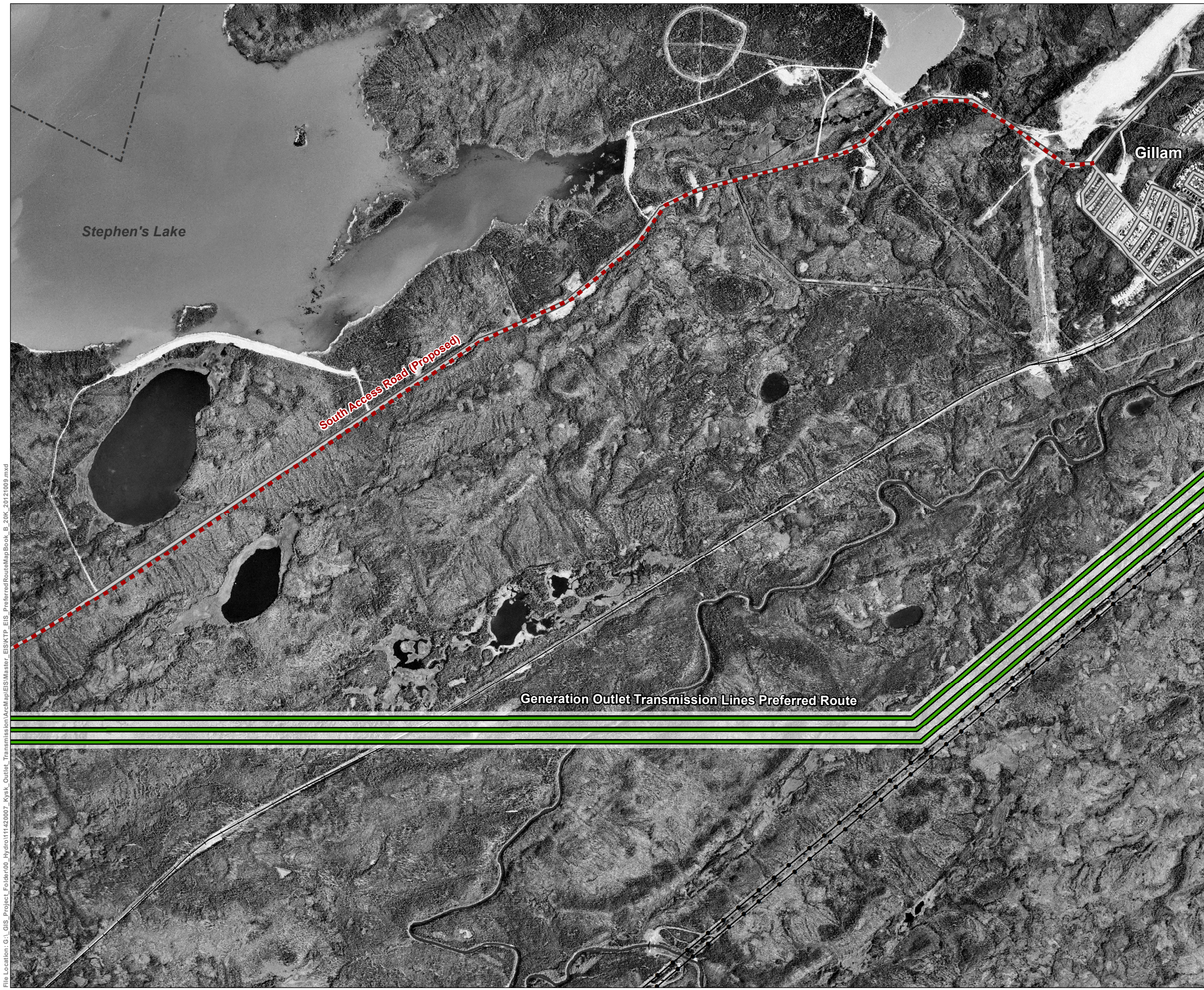
- Infrastructure**
- Generating Station
 - Bipole I and II (Existing 500 kV DC Line)
 - Transmission Line
 - South Access Road (Proposed)
 - North Access Road
 - Converter Station
 - Keeyask Generation Infrastructure

- Landbase**
- Community
 - Provincial Road
 - Municipal Road
 - Active Railway
 - Abandoned Railway
 - Watercourse
 - Waterbody
 - First Nation

Coordinate System: UTM Zone 15N NAD83
 Data Source: MBHydro, ProvMB, NRCAN
 Date Created: October 11, 2012



Preferred Routes and Sites Map Folio



File Location: G:\GIS_Project\Folder00_Hydro\111420007_Keeyask_Outlet_Transmission\ArcMap\EIS\Master_EIS\KTP_EIS_PreferedRouteMapBook_B_20K_20121009.mxd

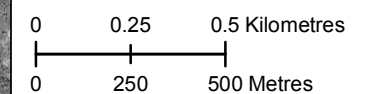
Keeyask Transmission Project

- Preferred Project Infrastructure**
- Generation Outlet Lines (200m ROW)
 - Construction Power Line (KN36) (60m ROW)
 - Construction Power Line (Temporary) (60m ROW)
 - Unit Lines (265m ROW)
 - Construction Power Station Site
 - Keeyask Switching Station Site
 - Project Study Area

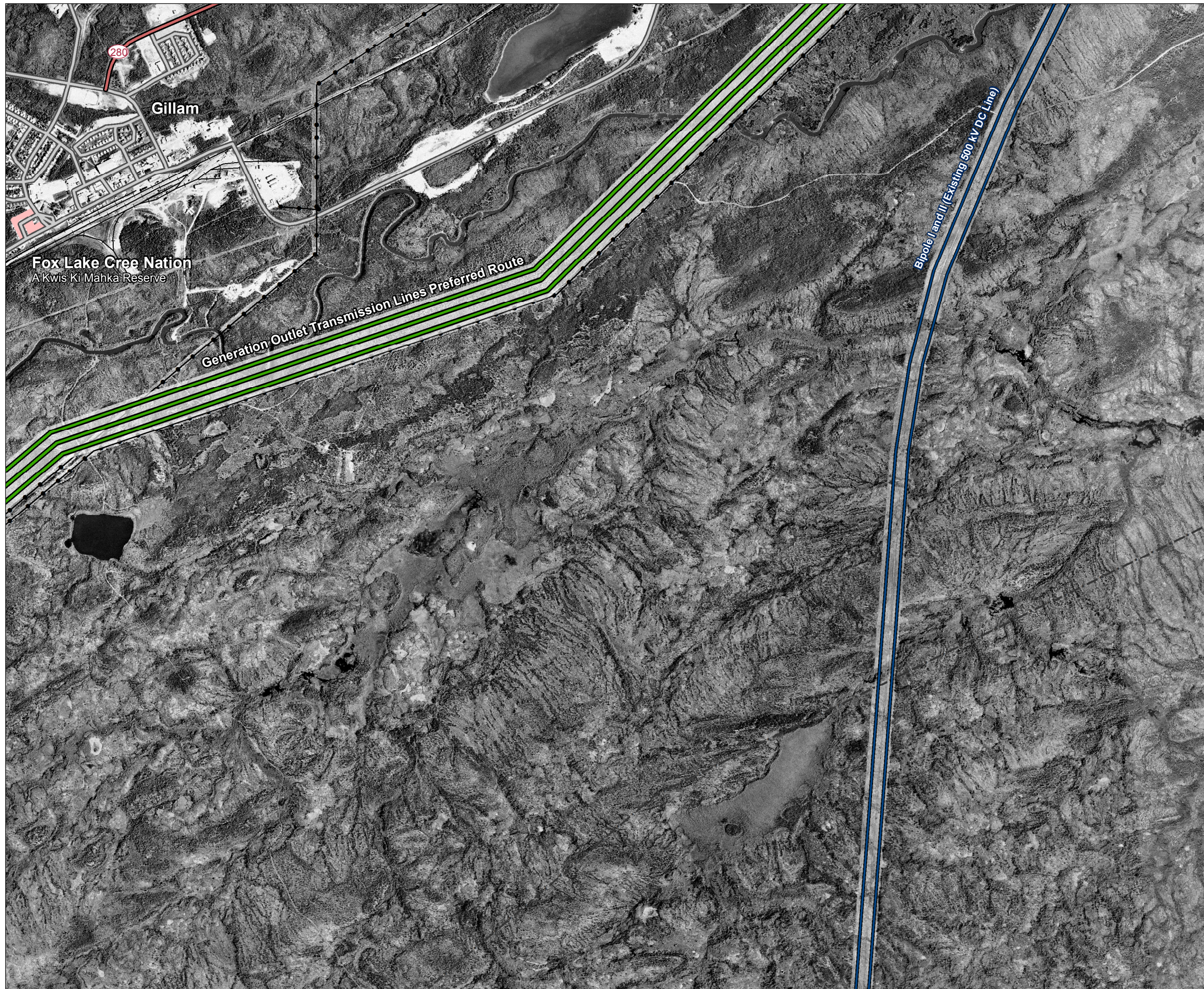
- Infrastructure**
- Generating Station
 - Bipole I and II (Existing 500 kV DC Line)
 - Transmission Line
 - South Access Road (Proposed)
 - North Access Road
 - Converter Station
 - Keeyask Generation Infrastructure

- Landbase**
- Community
 - Provincial Road
 - Municipal Road
 - Active Railway
 - Abandoned Railway
 - Watercourse
 - Waterbody
 - First Nation

Coordinate System: UTM Zone 15N NAD83
 Data Source: MBHydro, ProvMB, NRCAN
 Date Created: October 11, 2012



Preferred Routes and Sites Map Folio



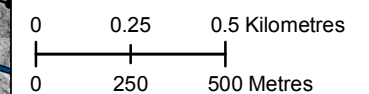
Keeyask Transmission Project

- Preferred Project Infrastructure**
- Generation Outlet Lines (200m ROW)
 - Construction Power Line (KN36) (60m ROW)
 - Construction Power Line (Temporary) (60m ROW)
 - Unit Lines (265m ROW)
 - Construction Power Station Site
 - Keeyask Switching Station Site
 - Project Study Area

- Infrastructure**
- Generating Station
 - Bipole I and II (Existing 500 kV DC Line)
 - Transmission Line
 - South Access Road (Proposed)
 - North Access Road
 - Converter Station
 - Keeyask Generation Infrastructure

- Landbase**
- Community
 - Provincial Road
 - Municipal Road
 - Active Railway
 - Abandoned Railway
 - Watercourse
 - Waterbody
 - First Nation

Coordinate System: UTM Zone 15N NAD83
 Data Source: MBHydro, ProvMB, NRCAN
 Date Created: October 11, 2012



Preferred Routes and Sites Map Folio



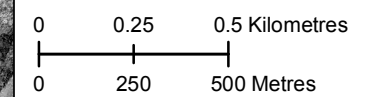
Keeyask Transmission Project

- Preferred Project Infrastructure**
- Generation Outlet Lines (200m ROW)
 - Construction Power Line (KN36) (60m ROW)
 - Construction Power Line (Temporary) (60m ROW)
 - Unit Lines (265m ROW)
 - Construction Power Station Site
 - Keeyask Switching Station Site
 - Project Study Area

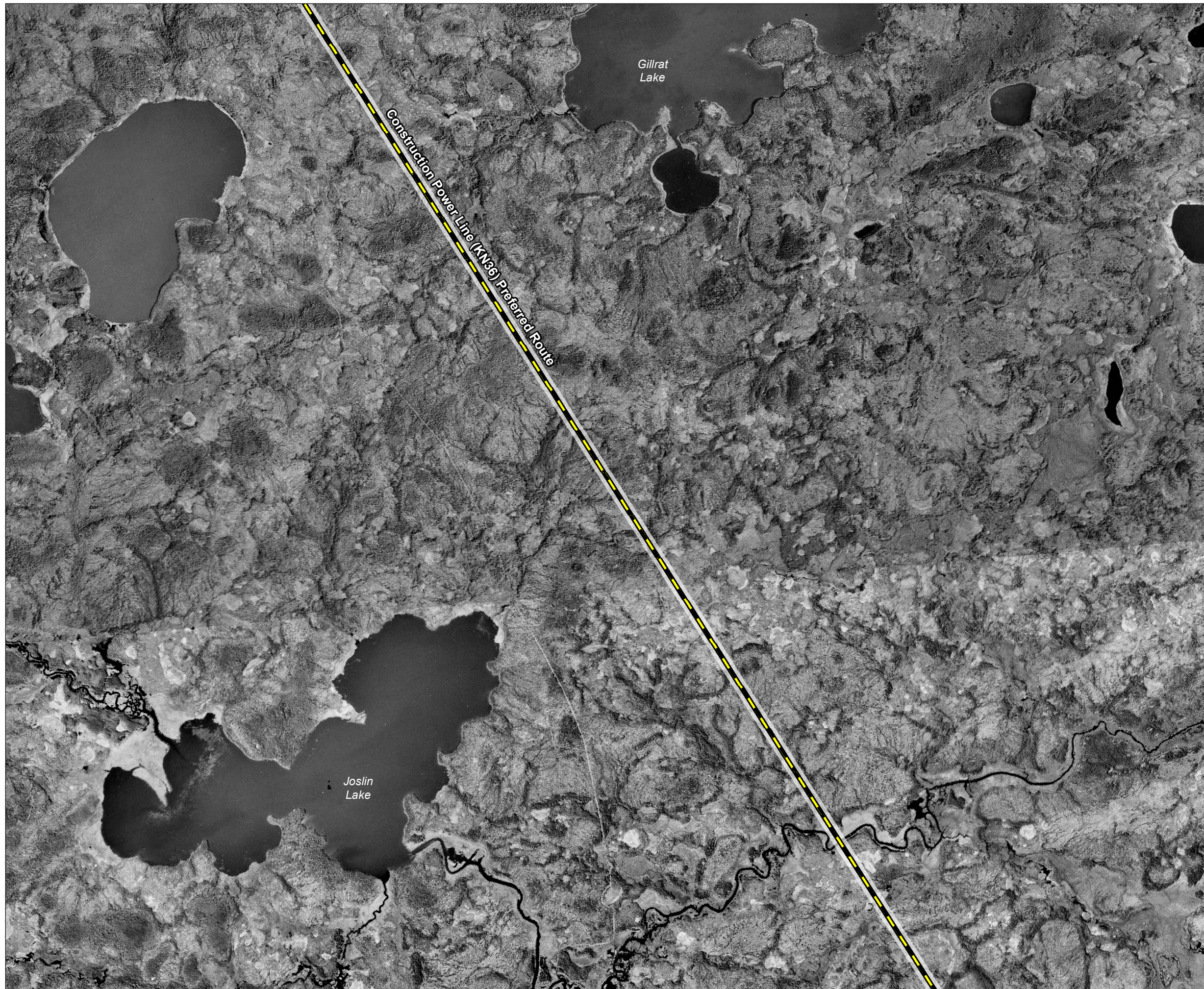
- Infrastructure**
- Generating Station
 - Bipole I and II (Existing 500 kV DC Line)
 - Transmission Line
 - South Access Road (Proposed)
 - North Access Road
 - Converter Station
 - Keeyask Generation Infrastructure

- Landbase**
- Community
 - Provincial Road
 - Municipal Road
 - Active Railway
 - Abandoned Railway
 - Watercourse
 - Waterbody
 - First Nation

Coordinate System: UTM Zone 15N NAD83
 Data Source: MBHydro, ProvMB, NRCAN
 Date Created: October 11, 2012



Preferred Routes and Sites Map Folio



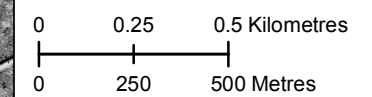
Keeyask Transmission Project

- Preferred Project Infrastructure**
- Generation Outlet Lines (200m ROW)
 - Construction Power Line (KN36) (60m ROW)
 - Construction Power Line (Temporary) (60m ROW)
 - Unit Lines (265m ROW)
 - Construction Power Station Site
 - Keeyask Switching Station Site
 - Project Study Area

- Infrastructure**
- Generating Station
 - Bipole I and II (Existing 500 kV DC Line)
 - Transmission Line
 - South Access Road (Proposed)
 - North Access Road
 - Converter Station
 - Keeyask Generation Infrastructure

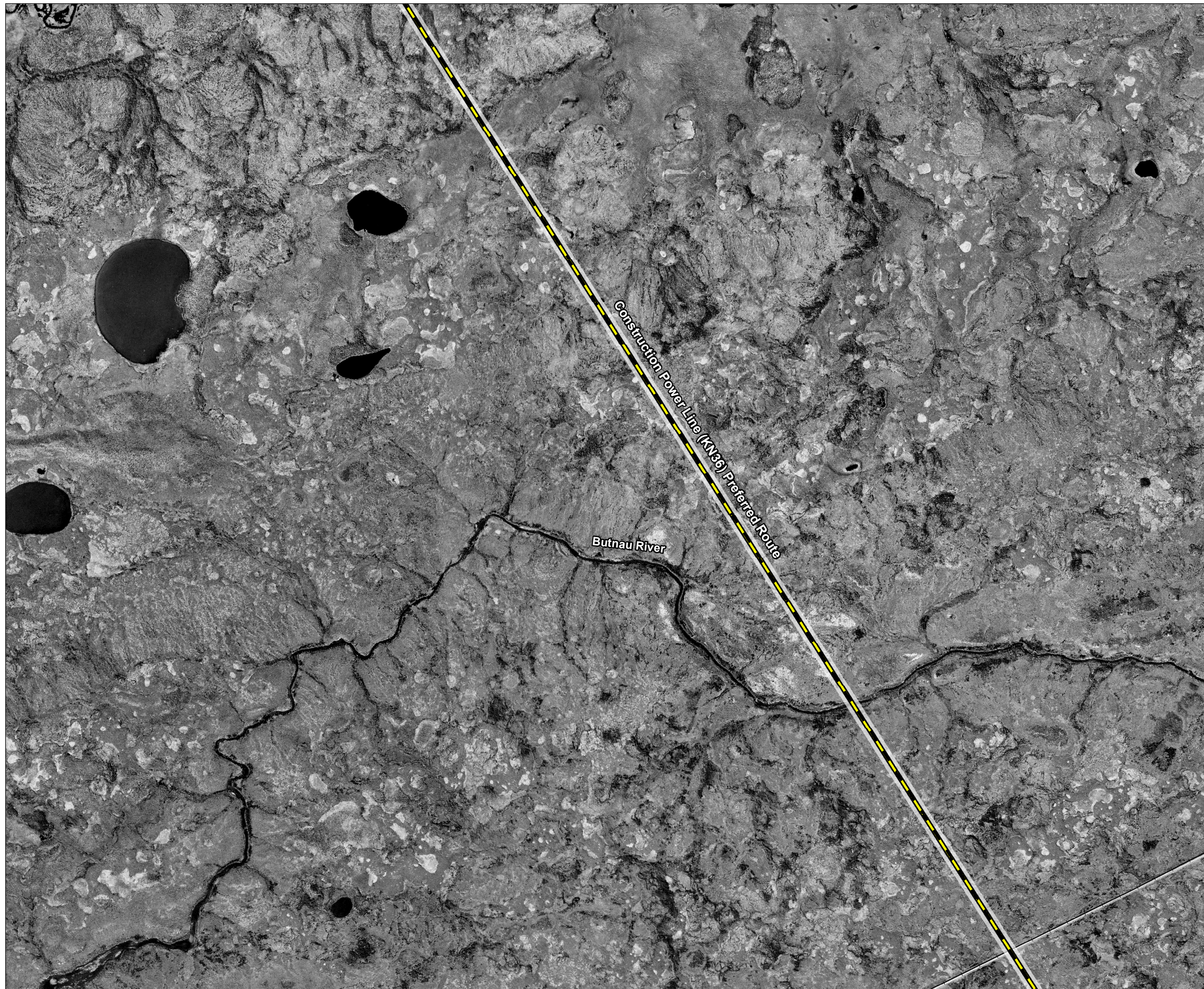
- Landbase**
- Community
 - Provincial Road
 - Municipal Road
 - Active Railway
 - Abandoned Railway
 - Watercourse
 - Waterbody
 - First Nation

Coordinate System: UTM Zone 15N NAD83
 Data Source: MBHydro, ProvMB, NRCAN
 Date Created: October 11, 2012



Preferred Routes and Sites

Map Folio



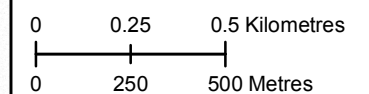
Keeyask Transmission Project

- Preferred Project Infrastructure**
- Generation Outlet Transmission Lines (200m ROW)
 - Construction Power Line (KN36) (60m ROW)
 - Construction Power Line (Temporary) (60m ROW)
 - Unit Lines (265m ROW)
 - Construction Power Station Site
 - Switching Station Site
 - Project Study Area

- Infrastructure**
- Generating Station
 - Bipole I and II (Existing 500 kV DC Line)
 - Transmission Line
 - South Access Road (Proposed)
 - North Access Road
 - Converter Station
 - Keeyask Generation Infrastructure

- Landbase**
- Community
 - Provincial Road
 - Municipal Road
 - Active Railway
 - Abandoned Railway
 - Watercourse
 - Waterbody
 - First Nation

Coordinate System: UTM Zone 15N NAD83
 Data Source: MBHydro, ProvMB, NRCAN
 Date Created: October 11, 2012



1:20,000

Preferred Routes and Sites Map Folio



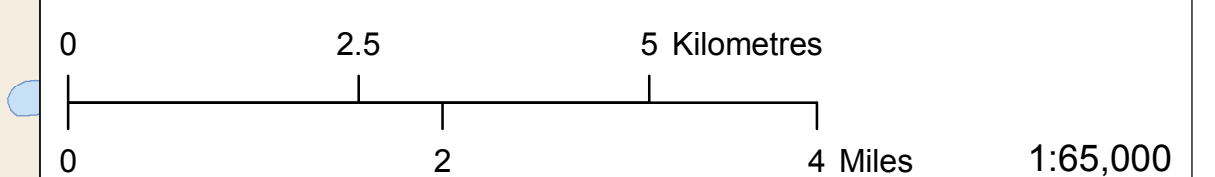
Keeyask Transmission Project

- Preferred Project Infrastructure**
- Generation Outlet Lines (200m ROW)
 - Construction Power Line (KN36) (60m ROW)
 - Construction Power Line (Temporary) (60m ROW)
 - Unit Lines (265m ROW)
 - Construction Power Station
 - Keeyask Switching Station
 - Project Study Area

- Infrastructure**
- Generating Station
 - Keeyask Generation Infrastructure (Proposed)
 - Radisson Converter Station
 - Bipole I and II (Existing 500 kV DC Line)
 - Transmission Line
 - South Access Road (Proposed)
 - North Access Road

- Landbase**
- Community
 - Provincial Road
 - Municipal Road
 - Active Railway
 - Abandoned Railway
 - Watercourse
 - Waterbody
 - First Nation

Coordinate System: UTM Zone 15 N, NAD 83
 Data Source: MBHydro, Stantec, ProvMB, NRCAN
 Date Created: October 04, 2012



Preferred Routes and Sites

